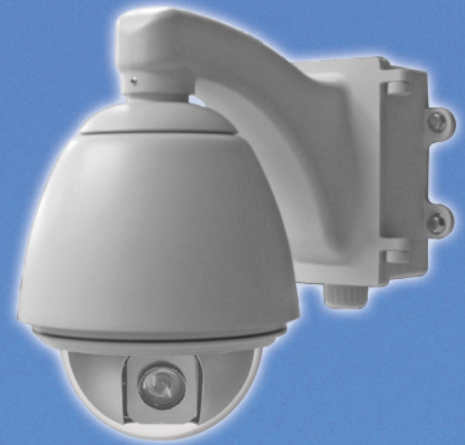


FAXCONT FC-460

Samsung Module Series
Speed Dome



Overview

FAXCONT® FC-460 Series High Speed Dome is the latest technology that incorporates a newly developed Digital Signal Processor (DSP). The firmware greatly enhances operability and picture quality.

It integrates a digital camera, lens, FAXCONT® protocol receiver, and variable high-speed pan/tilt and dome enclosure. The dome driver use a stepping motor, high acceleration rate, accurate position and smooth and steady motion to let the user very easily program and setup the target position.

The dome is capable of 128 preset target positions, 360° continuous pan rotation, 90° tilt scan range and 180° auto flip. A built-in fan and heater keep the inner temperature at an operational range. There is a heavy duty Aluminum wall mount bracket and double layer 6" dome to isolate outside temperature.

Main Features

- BLC and auto white balance.
- Auto-focus and auto-iris.
- AE control: Auto, Manual, Priority mode, Bright, EV compensation, Back-light compensation.
- 4 programmable patterns, each pattern with 8 preset positions.
- 360° continuous pan rotation.
- 90° tilt scan range.
- 180° auto flip.
- Manual pan speed: 0.1° ~ 240°/s.
- Manual tilt speed: 1.0° ~ 120°/s.
- Preset capture speed: 360°/s.
- It has 128 programmable preset positions, each preset position can setup text by user, the text can display English, Japanese and Chinese etc.
- Optional protocol translator to receive control commands from another source.
- FAXCONT® speed dome support protocol Qnap Vio, HuperLab DVR, Lilin DVR, Artnix DVR, CK DVR etc.
- FEVE Coating: Endure harsh environment, prevents acid and base moisture, five years warranty. (Optional)

Order Information

- Indoor Speed Dome : Matches with FC-12H、FC-16H
- Outdoor Speed Dome : Matches with FC-16W、FC-27W、FC-27WN、FC-29W



FC-460I
Samsung SDM-231



FC-460J
Samsung SDM-330



Technical Specifications

Specifications / Model	FC-460I	FC-460IP	FC-460J	FC-460JP
Video Signal Format	NTSC	PAL	NTSC	PAL
Day / Night	Yes		Yes	
Image Sensor	1/4" Interline Transfer CCD		1/4" Vertical double density interline CCD	
Horizontal Resolution	520 TV lines			
Num. of Effective Pixels	App. 380,000	App. 440,000	App. 380,000	App. 440,000
Lens	23X Optical, f=3.84 ~ 88.4mm, F1.6 ~ 3.2		30X Optical, f=3.3 ~ 99mm, F1.6 ~ 3.2	
Digital Zoom	10X (230X with optical zoom)		8X (240X with optical zoom)	
Minimum Illumination	Color : 0.7 Lux/F1.6 (50 IRE) B/W : 0.1 Lux/F1.6 (50 IRE)		Color : 0.4 Lux/F1.6 (50 IRE) B/W : 0.08 Lux/F1.6 (50 IRE)	
Flicker Cancel	Auto	—	Auto	—
Privacy Zone Masking	Yes			
S/N ratio	More than 50 dB			
Data Transfer	RS-485			
Power Consumption	DC12V			